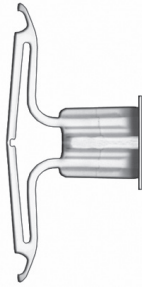


VERSA-TOGGLE



AVAILABLE MATERIALS

- High strength nylon

FEATURES/ADVANTAGES

- Excellent for light loads in gypsum board
- Fast, easy installation

APPROVALS/LISTINGS

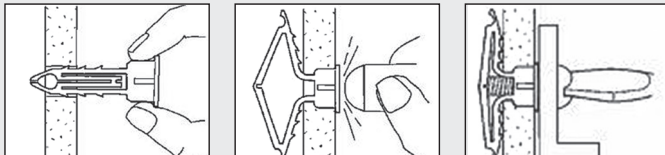
- G.S.A. Spec FF-B-588D, Type IV

ORDER DETAIL

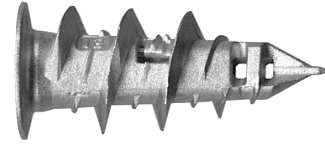
Order Code	Size	Hole Diameter	Wall Thickness	Screw Size	Box Qty.	Master Qty.
8512000	Short	5/16"	1/2"	6-8	100	800
8578000	Long	5/16"	1"	8-12	100	800

INSTALLATION

- 1 Drill 5/16" dia. hole, squeeze toggle wings flat and push into hole.
- 2 Tap flush with wall.
- 3 Put fixture in place, insert screw and tighten until secure.



SELF-DRILLING WALLBOARD



AVAILABLE MATERIALS

- Zinc diecast alloy
- High strength nylon

CONCERNS

- Hollow wall anchoring only

FEATURES/ADVANTAGES

- Works in any wallboard thickness
- Can be easily backed out
- Low profile head
- Fast, easy installation
- Zinc Anchor can be set with a 1/4" hex bit tip

ORDER DETAIL

1/2" Drywall						
Order Code	Description	Maximum Fixture Thickness	Tension	Shear	Box Qty.	Master Qty.
8561000	Plastic	3/4"	81	150	100	1200
* 8561100	Plastic Kit	3/4"	81	150	1	12
8571000	Zinc	3/4"	90	150	100	1200
* 8571100	Zinc Kit	3/4"	90	150	1	12

*Includes 50 #8 x 1-1/4" Screws and 50 Anchors

INSTALLATION

- 1 Place driving tool in anchor and puncture wallboard with anchor point.
- 2 Screw anchor clockwise applying forward pressure until head is flush to wall.
- 3 Place fixture over hole and tighten #8 or #10 sheet metal screw.

