

XL-300 TOOL



XL-300 Tool

Length	13"
Tool Weight	5 lbs.
Capacity	2 1/2" pin – 3" washered pin
Load Size	27 caliber strip

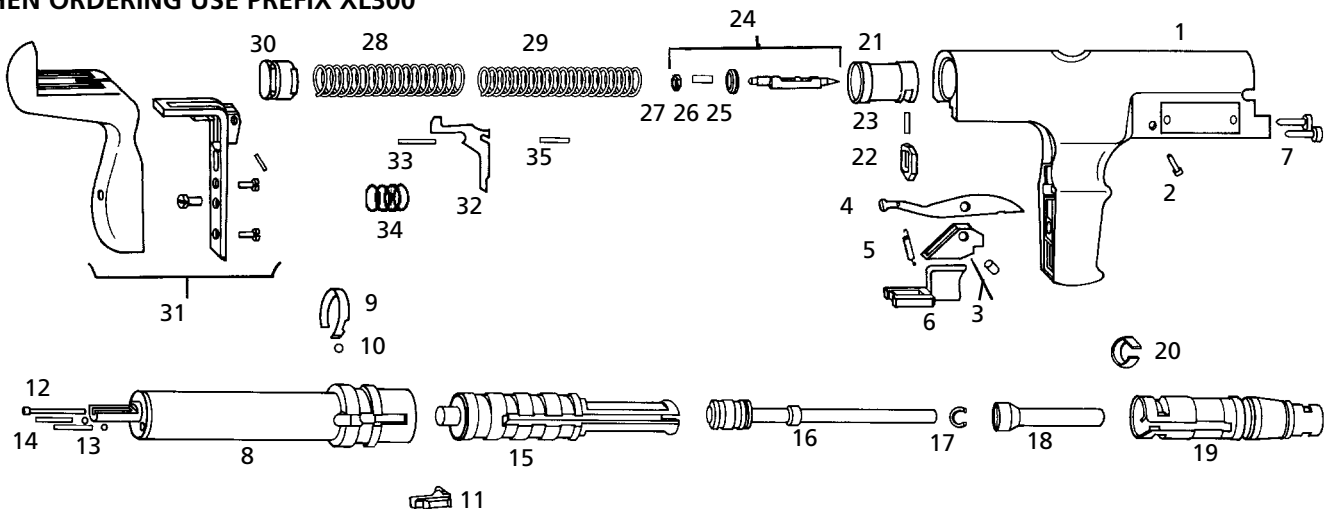
Features

- Cast aluminum body
- Can use 8 mm or .300 headed fasteners and 1/4-20 studs
- 27 caliber 10 shot strip loads 3 thru 5
- Medium duty professional tool
- Lockable carrying case

Items Included

- Ear plugs
- Safety goggles
- Lubricant
- Cleaning brush
- Owner/operator manual

WHEN ORDERING USE PREFIX XL300



1 – Tool Body	11 – Stop	20 – Shear Clip	29 – Spring Firing Pin
2 – Trigger Pin	12 – Push Pin	21 – Sear Holder	30 – Plug
3 – Holder, Advance Bar	13 – Ball, Balance	22 – Sear	31 – Rubber Pad Assy.
4 – Advance Bar	14 – Spring, Balance	23 – Spring, Sear	32 – Rock Arm
5 – Spring Advance Bar	15 – Piston Sleeve	24 – Firing Pin Assy. (Inc. 25, 26, 27)	33 – Spring, Upper Rock Arm
6 – Trigger	16 – Piston Flat & Ring	25 – Spring Holder, Firing Pin	34 – Spring, Lower Rock Arm
7 – Bolt	16A – Piston Concave	26 – Spring	35 – Pin, Rock Arm
8 – Body Liner	17 – Piston Ring	27 – Nut, Firing Pin	
9 – Annular Spring	18 – Guide	28 – Spring, Sear Holder	
10 – Ball Annular Spring	19 – Baseplate		PAT8150 – Cleaning Kit